

The Making of a Global World

A history of connection, commerce, and conquest. The integrated world we live in is not a recent phenomenon—it is the result of a centuries-long process driven by human ambition, technological leaps, and profound biological and social costs.



Long before the internet, the world was woven together by ancient flows of trade and biology.



3000 BCE (Commerce)



3000 BCE (Commerce)

An active coastal trade network linked the Indus valley civilizations with present-day West Asia. Cowries (seashell currency) from the Maldives found their way to China and East Africa for over a millennia.

7th Century (Biology)



7th Century (Biology)

The unmistakable, long-distance spread of disease-carrying germs began tracing paths across continents.

13th Century (Culture & Goods)



13th Century (Culture & Goods)

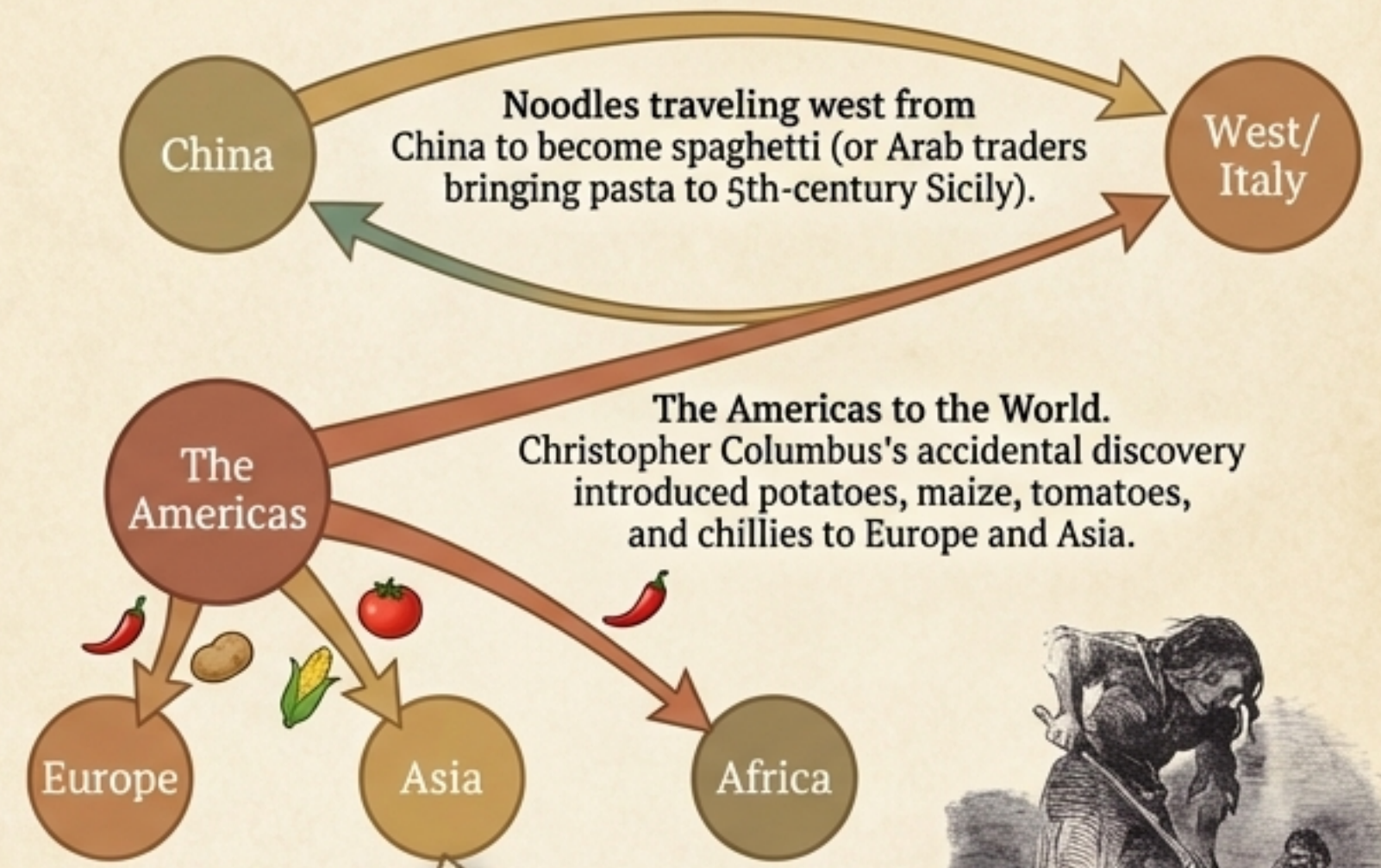
The Silk Routes reached their zenith, knitting together Asia, Europe, and Northern Africa with the exchange of goods and ideas.

The invisible origins of everyday life originated on the pre-modern web.

The Silk Route Trade Engine



The Global Kitchen



The Cost of Reliance

The humble potato allowed Europe's poor to live longer, but caused deadly dependence. When crop disease struck in the mid-1840s, 1,000,000 died in the Great Irish Potato Famine.



Biological imperialism paved the way for conquest faster than conventional military force.

The Vanguard of Conquest

Smallpox in the 16th-Century Americas

The Catalyst

Millions of years of isolation left Native populations with zero immunity to European germs.

The Impact

Decimated whole communities, spreading deep into the continent ahead of the actual conquerors.

The Outcome

Cleared the path for Spanish and Portuguese colonization.

"The natives... were neere all dead of small Poxe, so as the Lord hathe cleared our title to what we possess."

— John Winthrop, 1634

Rinderpest in Late 19th-Century Africa

The Catalyst

Infected cattle imported from British Asia to feed Italian soldiers invading Eritrea in the late 1880s.

The Impact

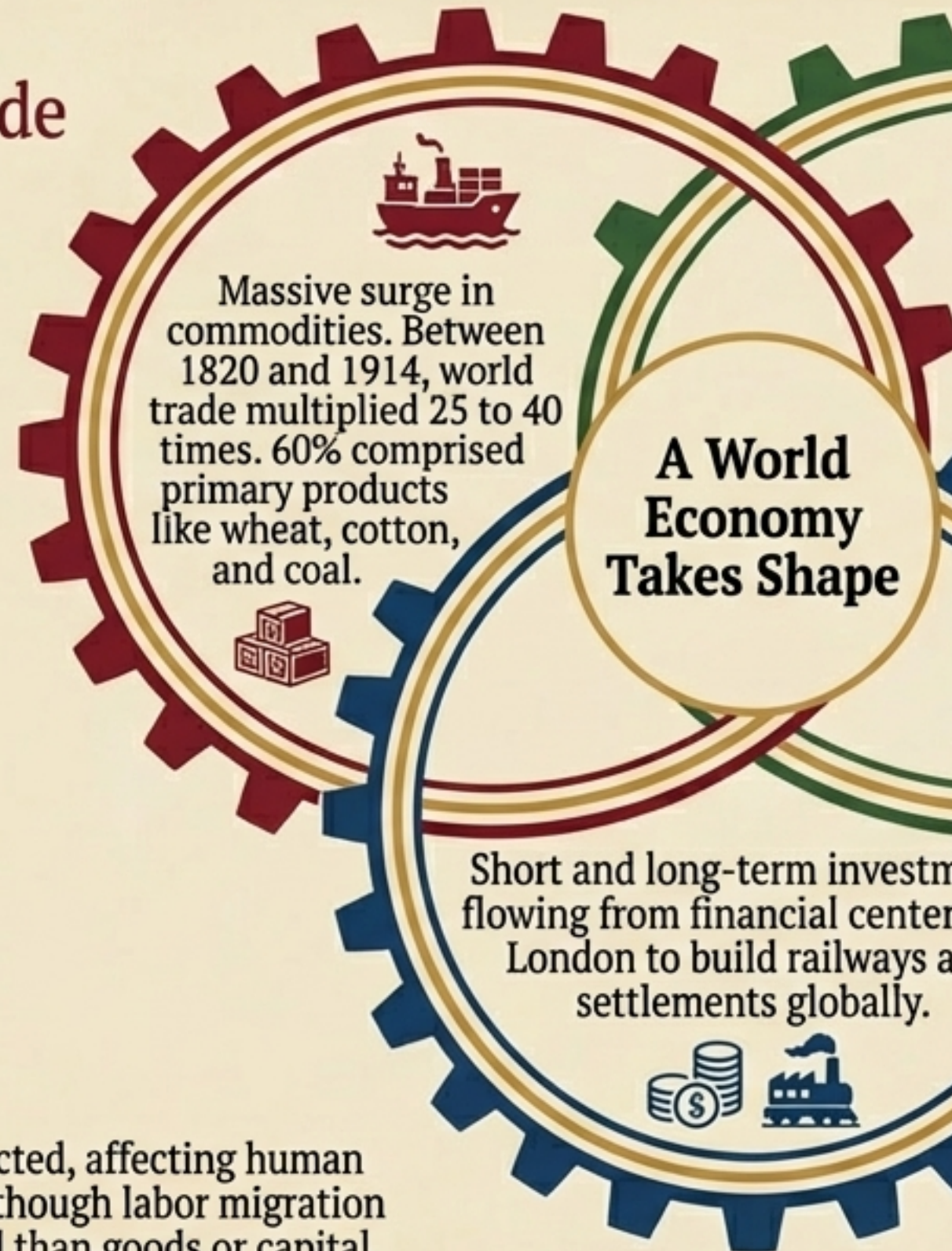
Moved like a forest fire to the Atlantic coast by 1892, killing 90% of African cattle.

The Outcome

Destroyed self-sustaining African livelihoods, forcing populations into the wage-labor market to work European mines and plantations.

The nineteenth century accelerated connection through three interwoven economic flows.

The Flow of Trade (Goods)



The Flow of Labour (Migration)



Movement of people in search of employment. Around 150 million people left their homes and crossed oceans worldwide.



The Flow of Capital (Investment)

Short and long-term investments flowing from financial centers like London to build railways and settlements globally.



These flows were deeply interconnected, affecting human lives more deeply than ever before, though labor migration was often more artificially restricted than goods or capital.

Scrapping Britain's 'Corn Laws' triggered a massive restructuring of global agriculture.

Urbanization & Demand

Late 18th-century British population and industrial growth pushes up food grain prices.

The Corn Laws

Landed groups pressure the government to restrict corn imports, artificially keeping prices high.

Industrialist Backlash

Angry urban dwellers and industrialists force the abolition of the Corn Laws.

Market Collapse

Cheap imported food floods Britain. Local agriculture cannot compete; lands are left uncultivated.

The Global Farm

By 1890, a global agricultural economy forms. Forests are cleared globally, railways are built, and harbors are expanded specifically to feed British demand.



Technology acted as the great accelerator of global trade and social stability.



Pre-1870s (The Live Trade)

Animals shipped live from America to Europe. They took up massive space, died in voyage, or lost weight.

Result: Meat was a rare, expensive luxury. Monotonous diets of bread and potatoes for the European poor.



Post-1870s (The Refrigerated Ship)

Animals slaughtered at the starting point (America, Australia, NZ) and shipped as frozen cargo.

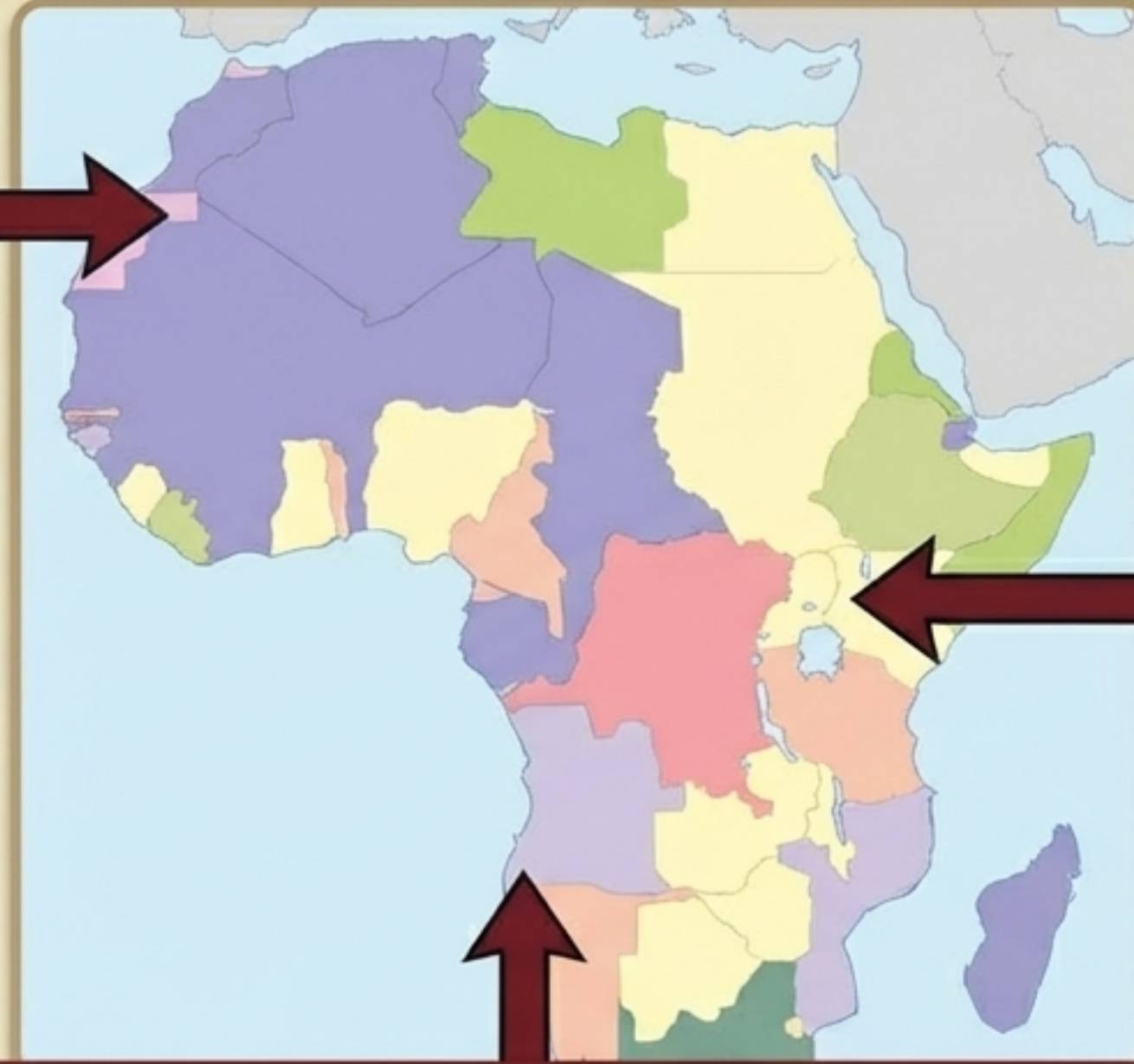
Result: Drastically lowered shipping costs. The European poor gained varied diets (adding meat, butter, eggs). Better living conditions promoted internal social peace and boosted support for imperialism abroad.

The expansion of global markets required the systemic extraction of colonized lands.

1

The Ruler Borders

In 1885, rival European powers met in Berlin to arbitrarily carve up Africa, drawing straight borders complex territories to distribute lands among Britain, France, Belgium, and Germany.



2

The Resource Motivation

Europeans arrived to establish plantations and mines, aiming to export Africa's vast mineral and land wealth.

3

The Labour Coercion

Facing a shortage of willing wage laborers, colonizers imposed heavy taxes payable only through mine/plantation work, changed inheritance laws to displace peasants, and confined mineworkers in compounds.

A 'new system of slavery' fueled global growth but birthed resilient new cultures.

The Mechanics of Coercion

- 🌿 Hundreds of thousands of Indian and Chinese laborers were hired under 5-year contracts to work global plantations and mines.
- 🌿 Migrants from impoverished regions were tempted by agents providing false information about destinations and work conditions. Sometimes, they were forcibly abducted.
- 🌿 Main destinations included the Caribbean, Mauritius, Fiji, Ceylon, and Malaya.

Cultural Fusion (The Human Response)

- 🌿 To survive harsh conditions, laborers blended old and new cultural forms.
- 🌿 In Trinidad, the Muharram procession transformed into the riotous "Hosay" carnival for all races.
- 🌿 The protest religion of Rastafarianism reflects links to Indian migrants.
- 🌿 "Chutney music" emerged as a creative expression of the post-indenture experience.

The pre-1914 world established the exact framework of the modern global economy.



Globalization is not a modern invention. It is the centuries-old story of humanity searching for connection—defined simultaneously by incredible technological innovation, the vibrant fusion of cultures, and profound, systemic human costs. The blueprint of our interconnected lives today was fully drafted over a century ago.