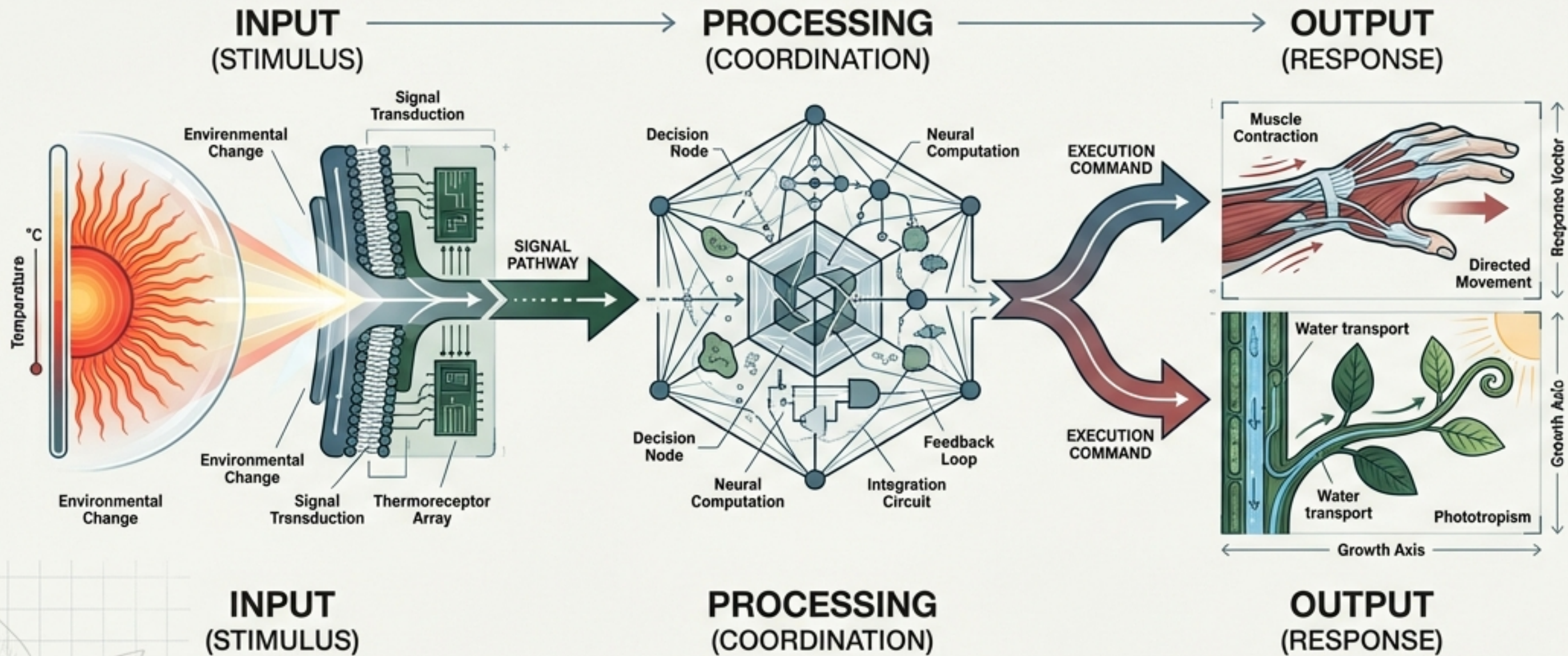
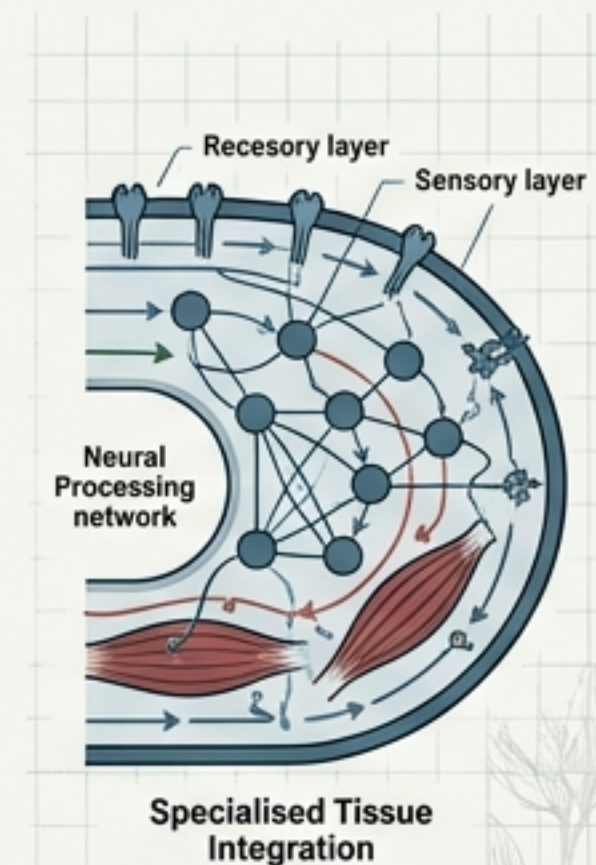


THE FUNDAMENTAL CHALLENGE: ORDER FROM CHAOS



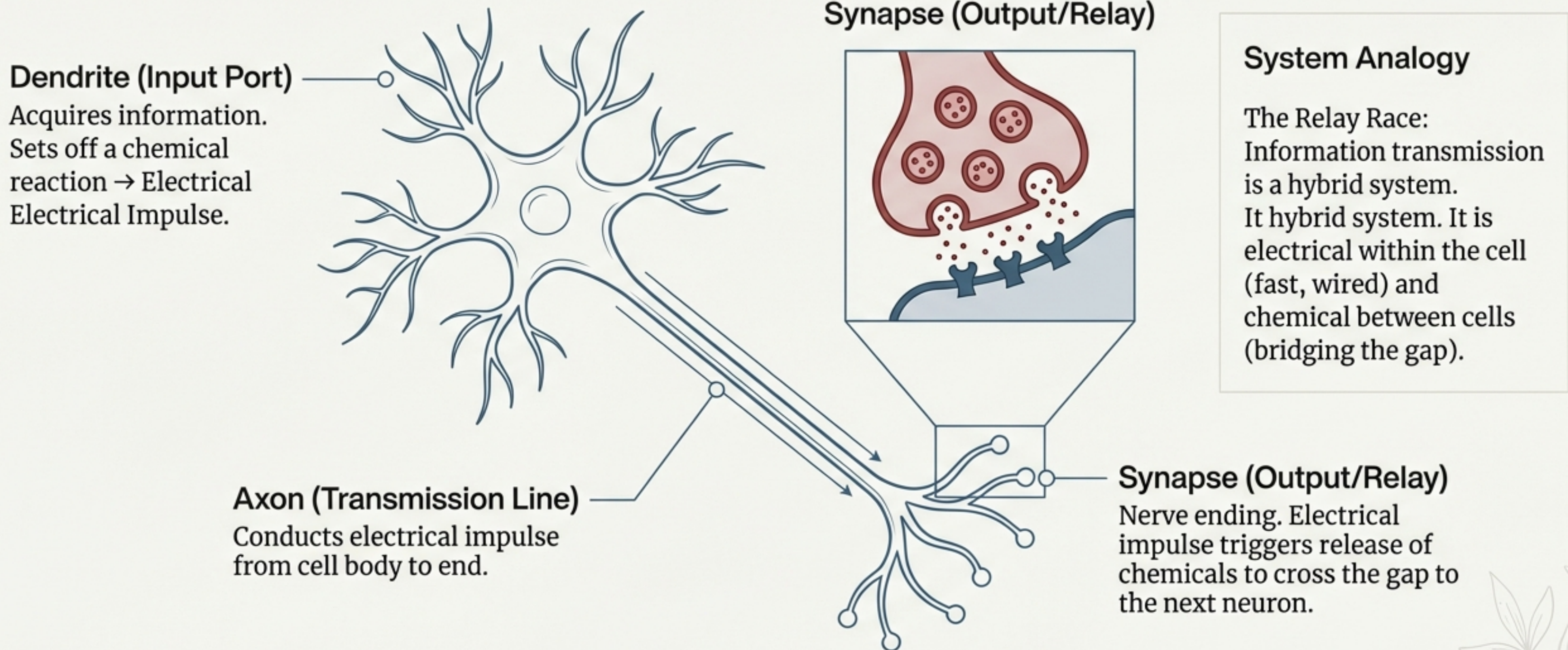
THE BIOLOGICAL REQUIREMENT

Multicellular organisms require specialised tissues to connect detection to execution. This distinguishes a “reflex” from random motion.

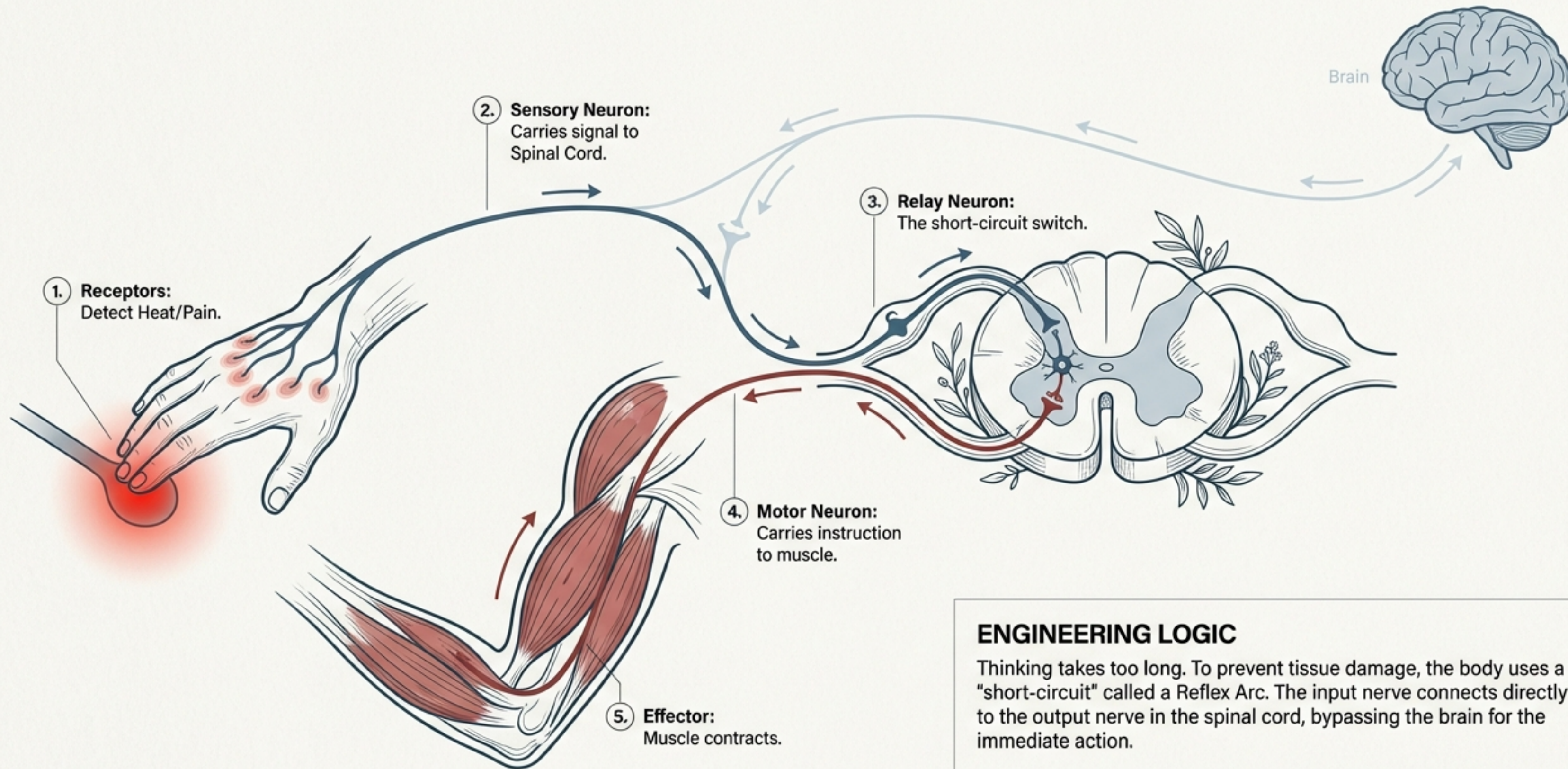


Core Concept: All useful movement is an attempt to use environmental changes to the organism's advantage.

The Hardware of Thought: The Neuron



THE NEED FOR SPEED: THE REFLEX ARC

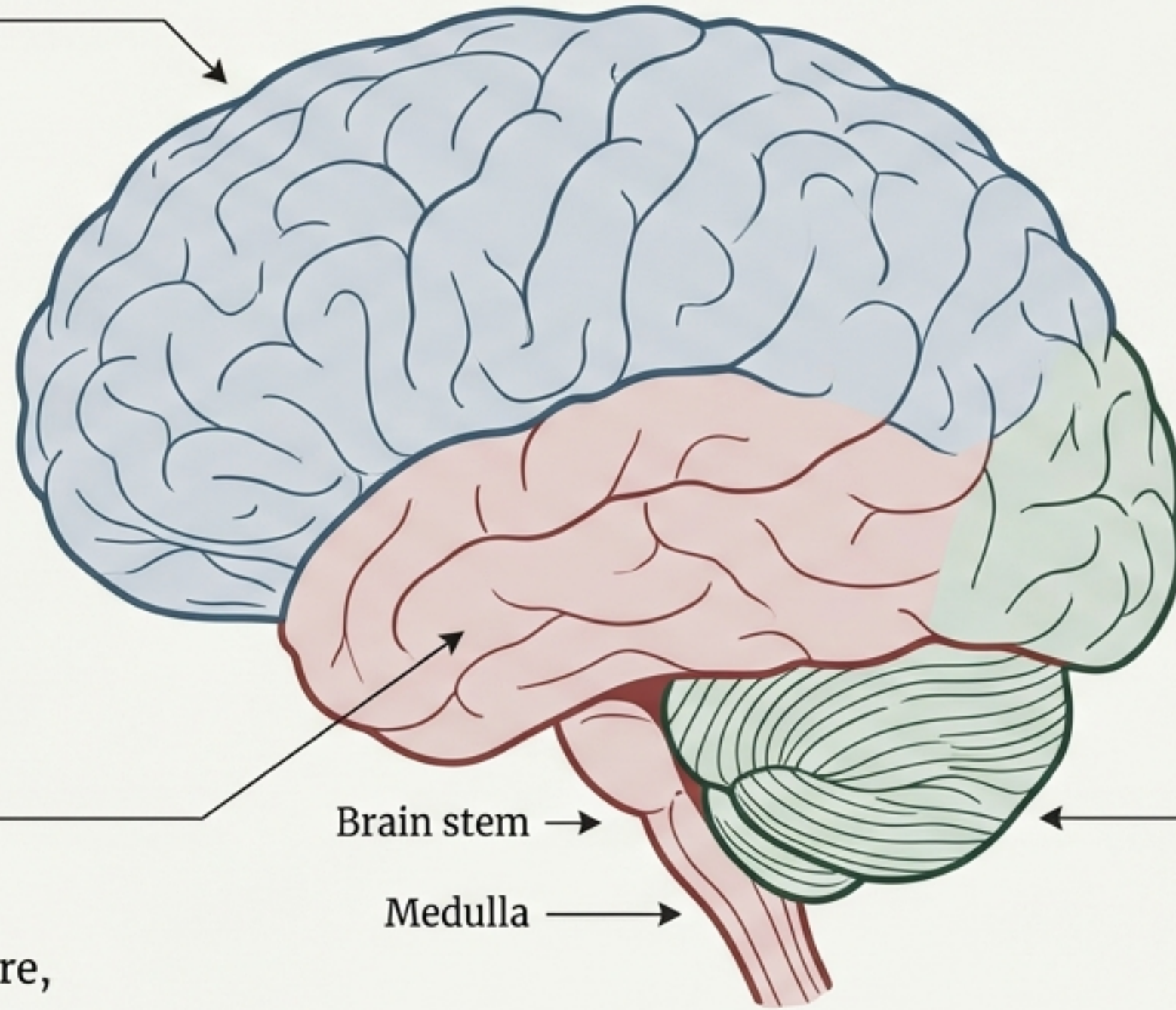


ENGINEERING LOGIC

Thinking takes too long. To prevent tissue damage, the body uses a "short-circuit" called a Reflex Arc. The input nerve connects directly to the output nerve in the spinal cord, bypassing the brain for the immediate action.

Central Command: The Human Brain

Fore-brain (The Thinker):
Main thinking part. Integrates sensory inputs (hearing, smell, sight) with memory. Controls voluntary actions and sensations like hunger.



Mid-brain & Hind-brain (The Autopilot): Controls involuntary life support. The Medulla regulates blood pressure, salivation, and heartbeat.

Brain stem →

Medulla →

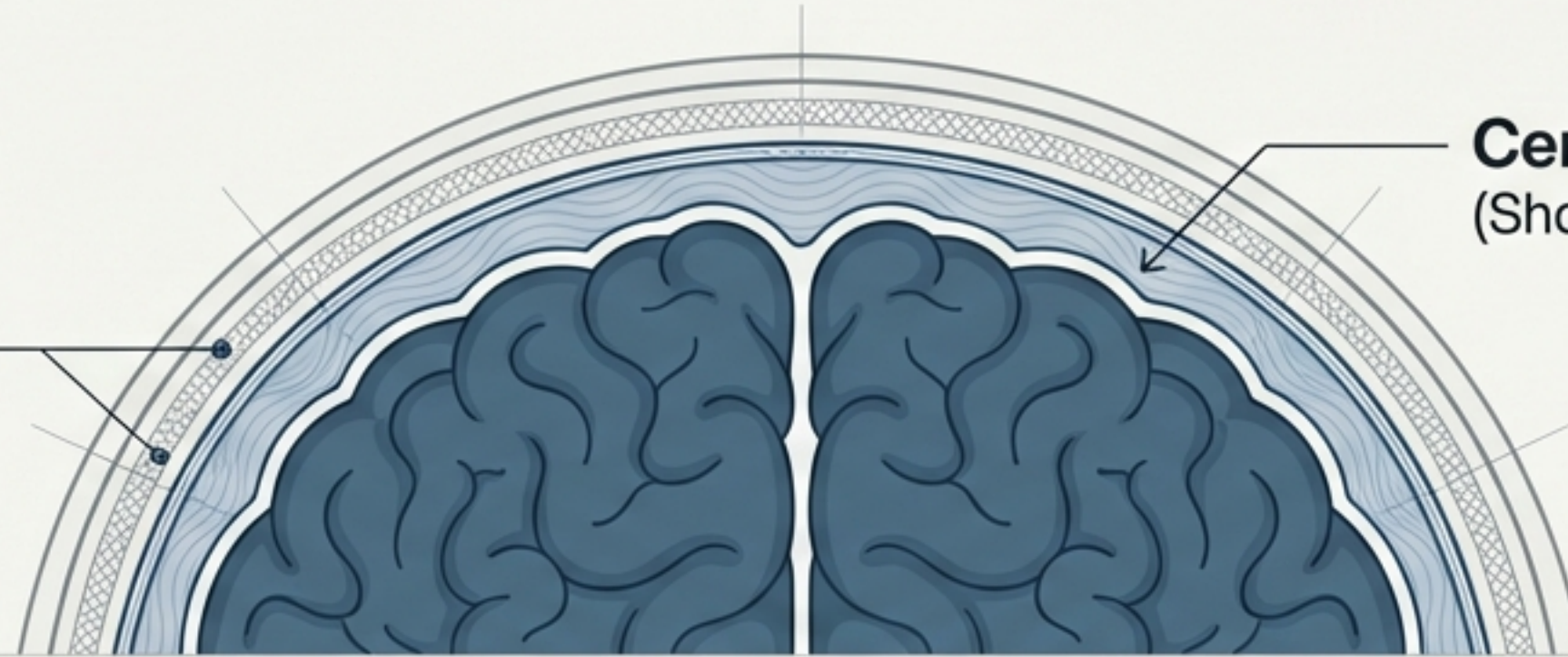
Cerebellum (The Stabilizer):
Precision and balance. Enables complex coordination like riding a bicycle or walking in a straight line.

PROTECTION AND EXECUTION



Protection (The Fortress)

Cranium
(Bony Box)

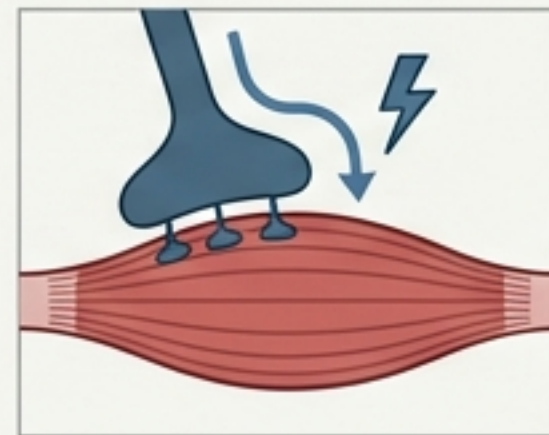


Cerebrospinal Fluid
(Shock Absorption Balloon)

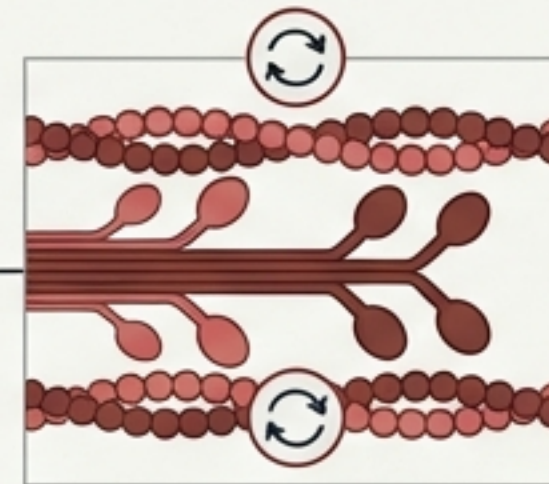


Execution (The Actuator)

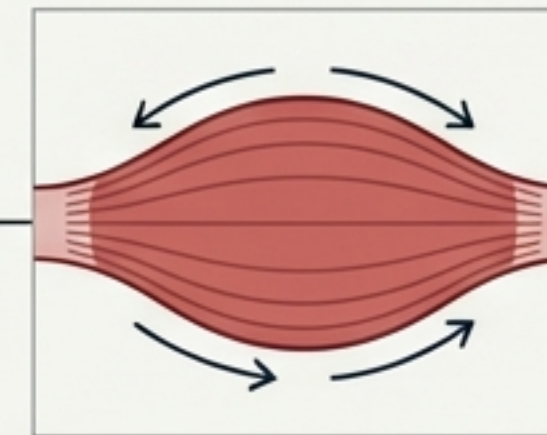
How does an electrical impulse cause movement? It is chemistry. Muscle cells contain specialised proteins.



Step 1: Electrical Impulse arrives



Step 2: Proteins change shape/arrangement



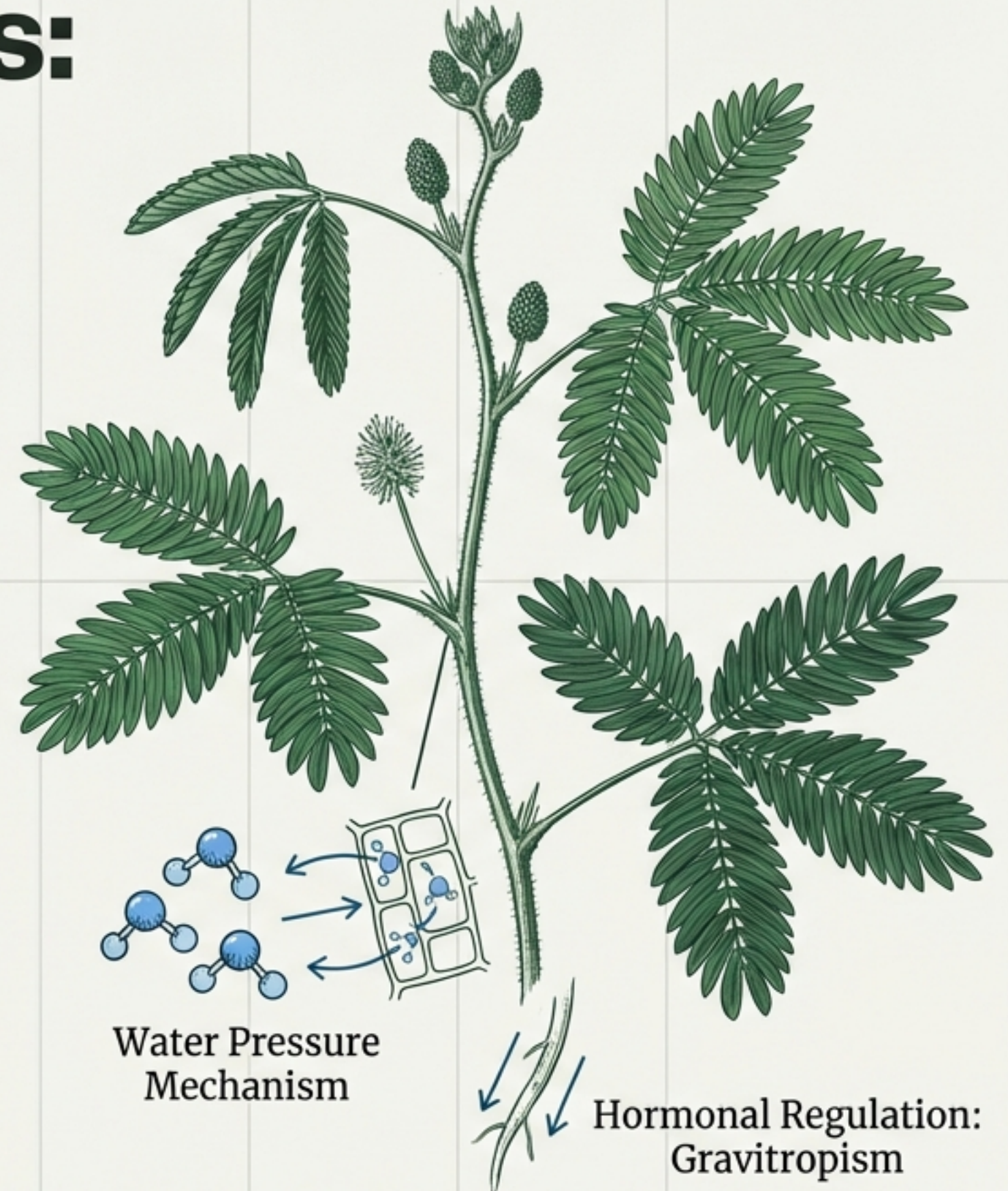
Result: Muscle Cell Shortens



The Wireless Engineers: Plant Intelligence

Solving Movement without Muscles

- **The Constraint:** Plants possess no nervous system and no muscle tissue.
- **The Solution:** Two engineered response systems:
 1. **Growth-Independent Movement:** Immediate, reversible response to stimuli (e.g., Sensitive Plant folding).
Mechanism: Water pressure.
 2. **Growth-Dependent Movement:** Slow, permanent directional movement (e.g., Roots growing down).
Mechanism: Hormonal regulation.



The Hydraulic Motor: Immediate Response

State A: Open/Turgid

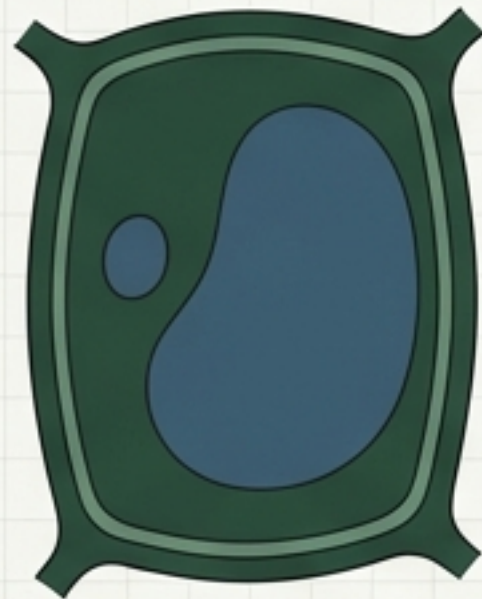


State B: Folded/Flaccid

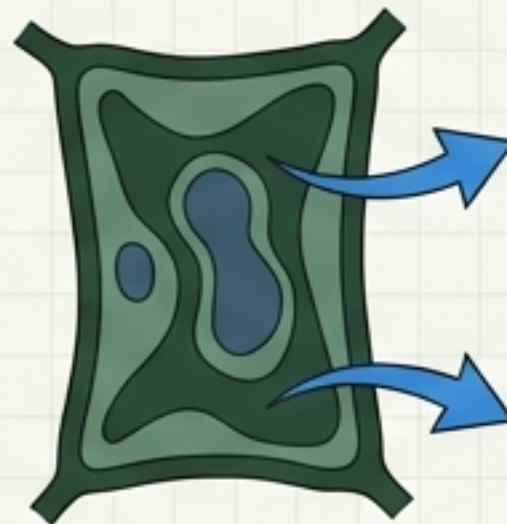


The Mechanism:

1. **Detection:** The plant uses electrochemical signals to convey touch information from cell to cell.
2. **Actuation:** Plant cells change shape by altering the amount of water they hold.
3. **Result:** Cells shrink or swell, causing the leaf structure to fold. It is a hydraulic system.

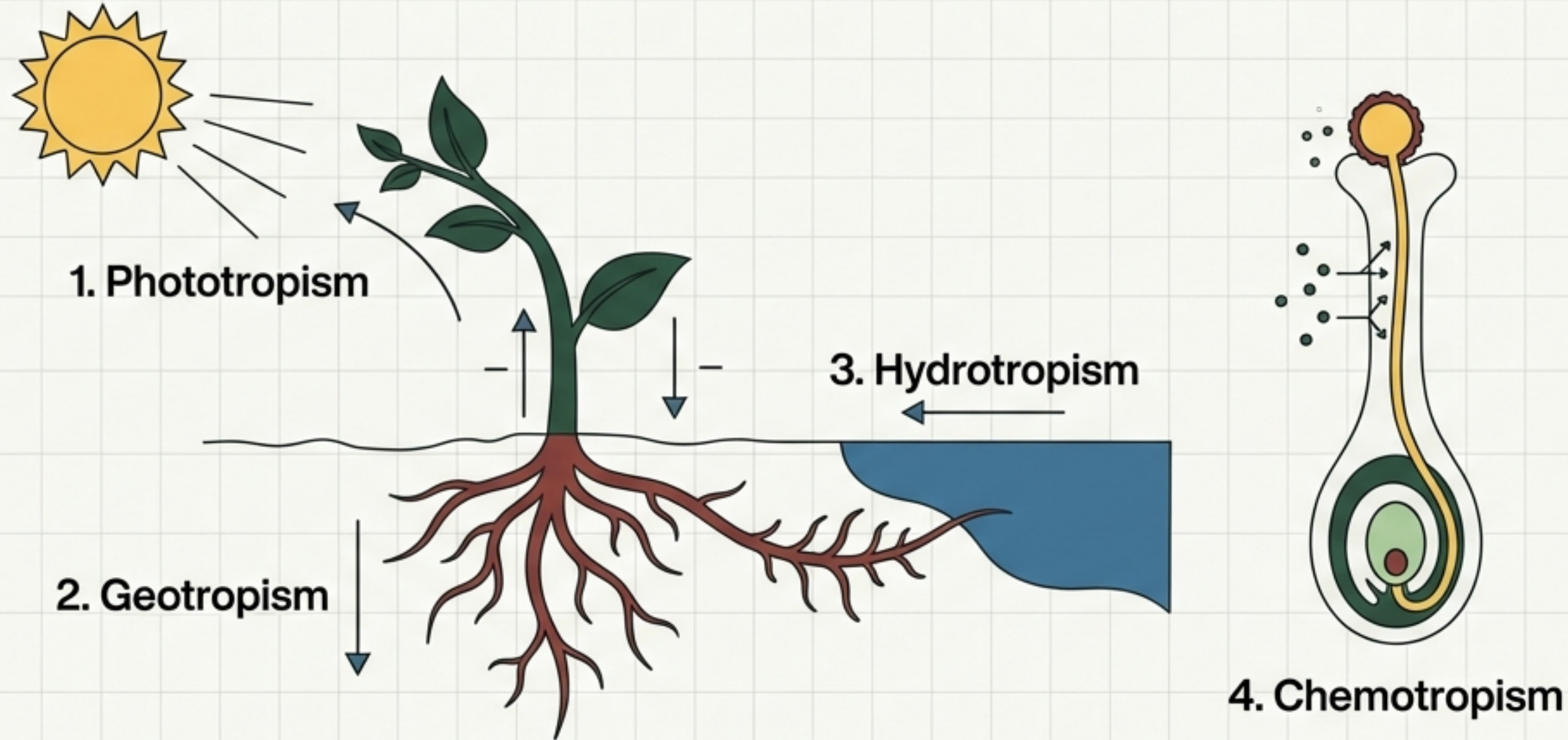


Turgid Cell
(Full of Water)



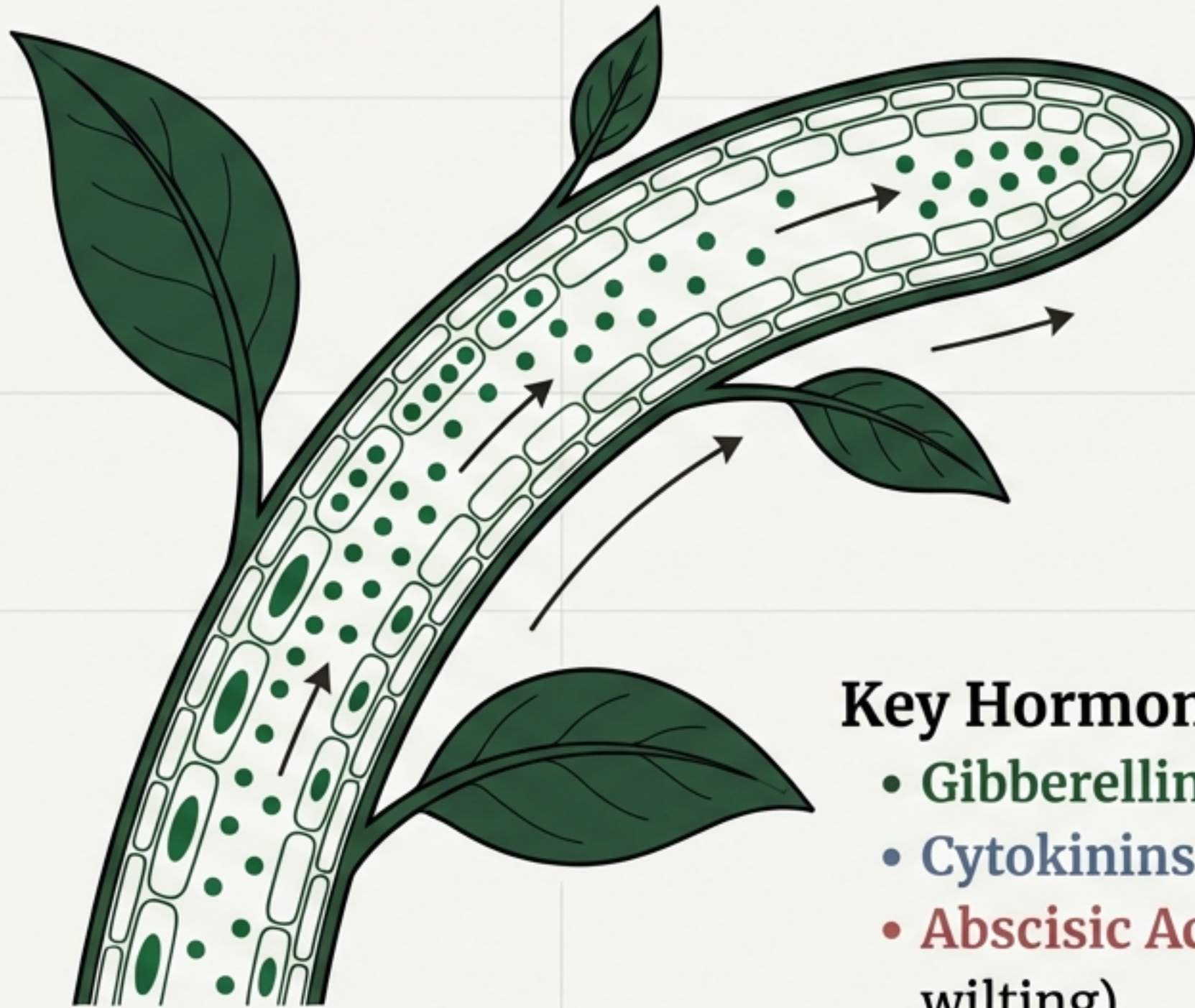
Flaccid Cell
(Water Lost)

Directional Logic: Tropisms



Tropisms are directional movements where growth is determined by the stimulus. Positive tropism is towards the stimulus; negative is away.

Chemical Messengers: Plant Hormones



Auxin Strategy:

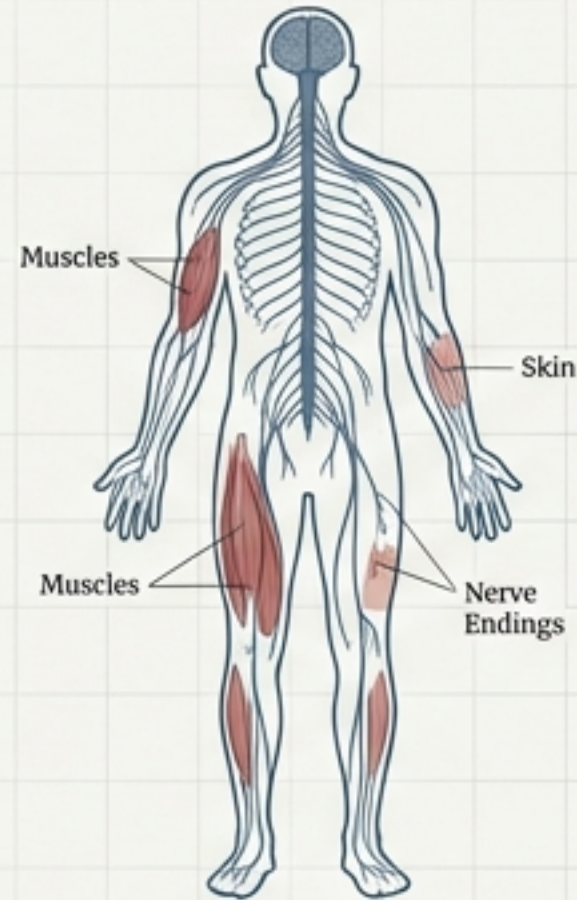
- Synthesized at the tip.
- Diffuses to the shady side.
- Causes cells on the shady side to elongate.
- Result: Plant bends towards light.

Key Hormones:

- **Gibberellins:** Promote stem growth.
- **Cytokinins:** Promote cell division (found in seeds/fruits).
- **Abscisic Acid:** Inhibits growth (The 'Stop' signal leading to wilting).

The Limits of Electricity

The Nervous System

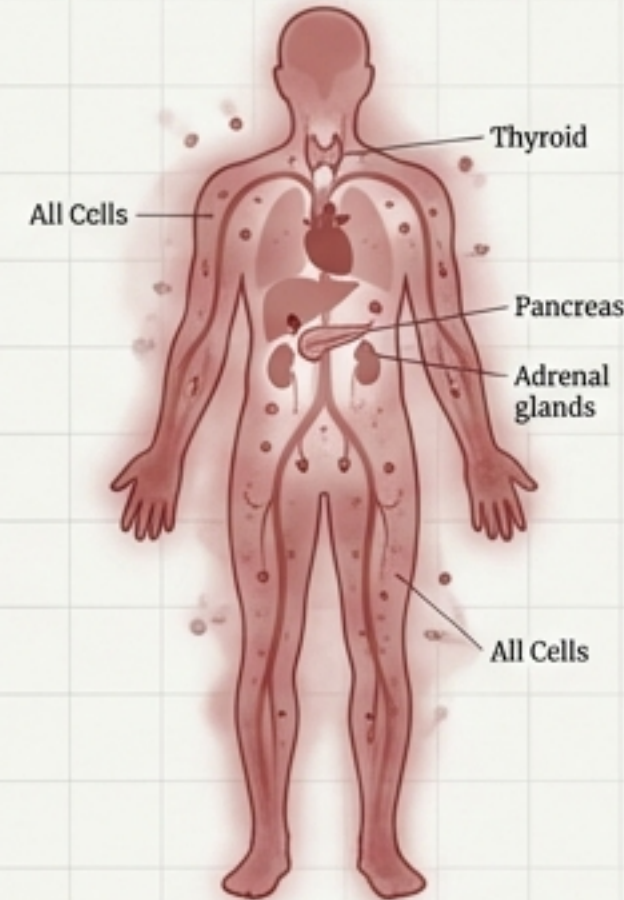


Fast, but Limited Reach

The Engineering Bottleneck:

Electrical impulses are fast but only reach cells connected by nerve tissue. They cannot communicate with every cell.

The Endocrine System

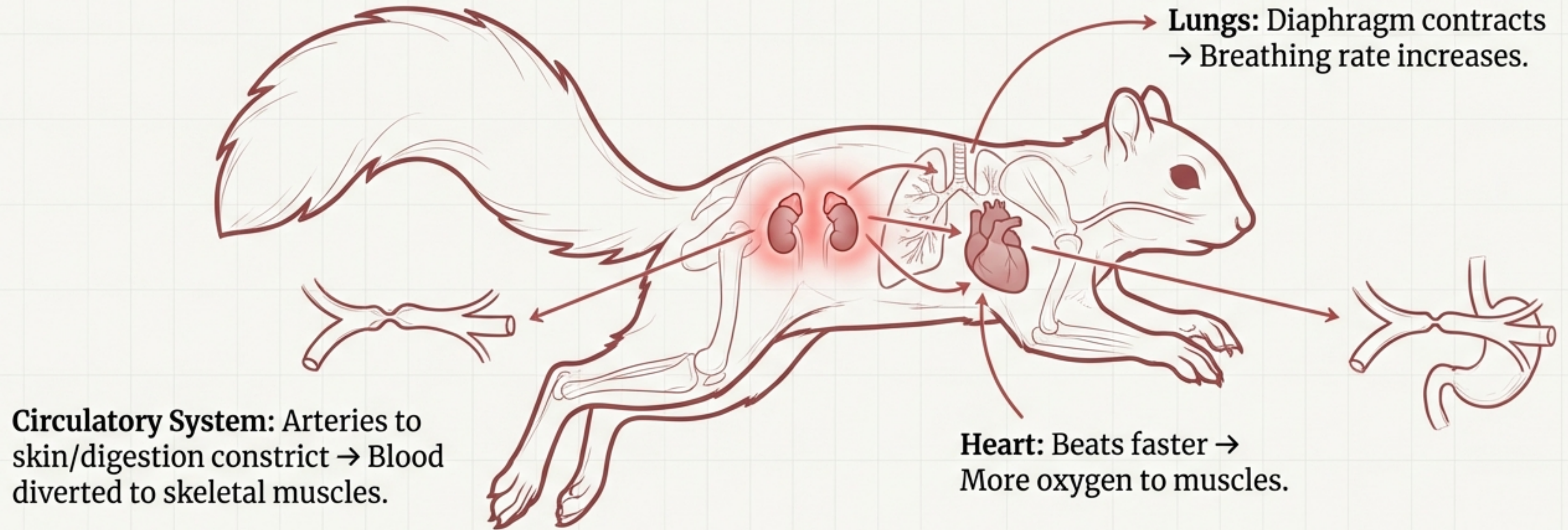


Slow, but Universal Reach

The Broadcast Solution:

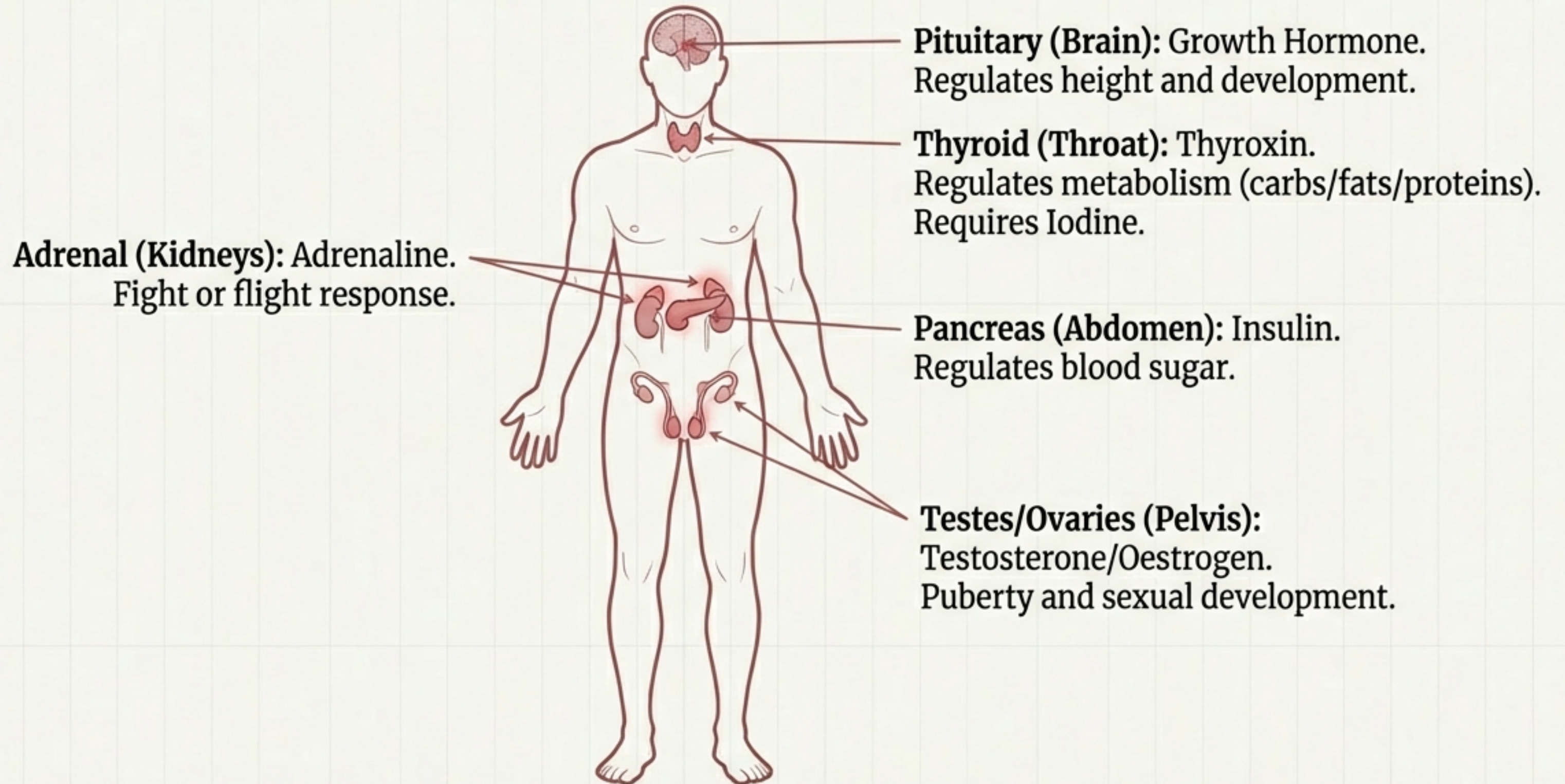
Chemical Communication (Hormones). Chemicals diffuse through the blood, reaching every cell in the body. This allows for steady, persistent coordination.

System-Wide Override: Adrenaline

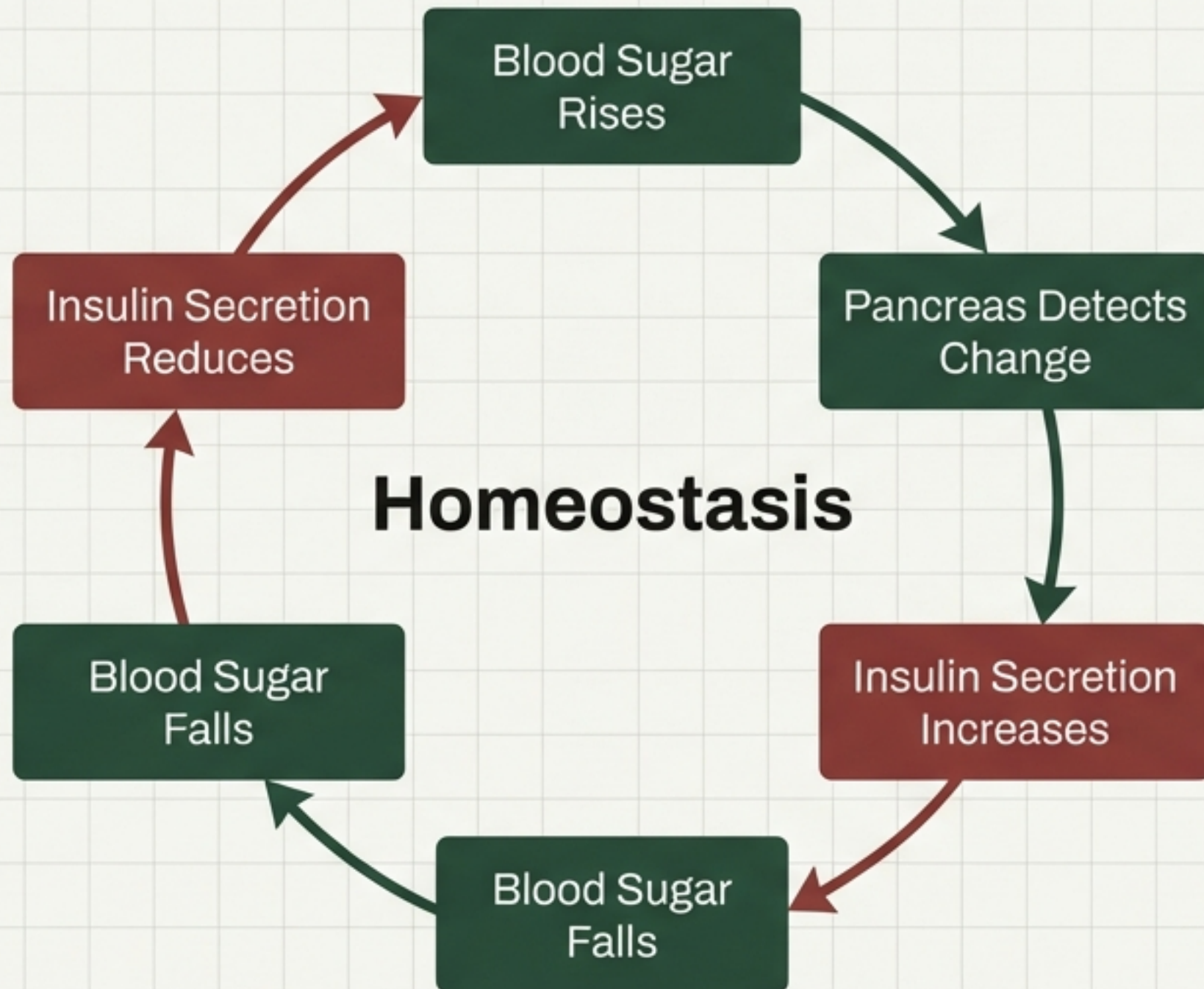


Scenario: A squirrel sees a predator. Nerves are too specific. The body needs a global state change. Adrenaline provides a coordinated chemical override to prepare for extreme exertion.

The Endocrine Map



Precision Control: The Feedback Loop



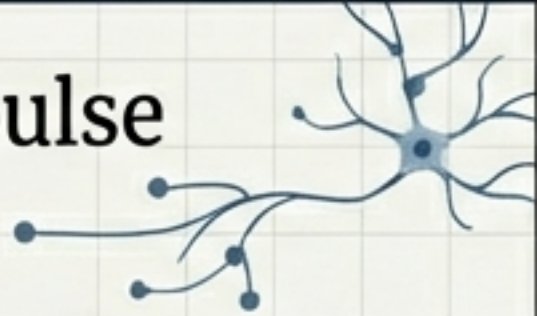
Case Study: Diabetes.

Without precise feedback, the system fails. Insulin allows the body to self-correct based on real-time data, maintaining balance.

Two Systems, One Organism

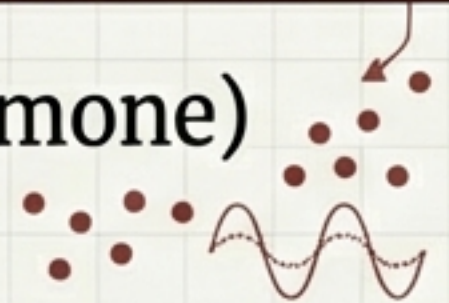
Nervous System (The Wired Network)

- **Signal:** Electrical Impulse
- **Speed:** Very Fast
- **Reach:** Specific cells only
- **Duration:** Fleeting/Temporary
- **Best For:** Reflexes, Movement



Endocrine System (The Broadcast Network)

- **Signal:** Chemical (Hormone)
- **Speed:** Slow
- **Reach:** All cells (via Blood)
- **Duration:** Persistent/Steady
- **Best For:** Growth, Metabolism, Development



Survival depends on the seamless integration of these high-speed wired networks and pervasive wireless chemical signals. Together, they turn environmental chaos into coordinated life.